



NORTH AMERICA | AGRICULTURAL RANGE



A proven commitment to agriculture.

JCB has been a partner to the agricultural industry since Joseph Cyril Bamford (Mr. JCB) built his first farm trailer in 1945. In the 70-plus years that have followed, JCB has forged a reputation for performance, productivity and reliability, to become a name that farmers trust to get the job done.

Never content, JCB is committed to investing in the technology that makes farmers' lives easier and farms more efficient. JCB invented the backhoe loader in 1953. In 1977, JCB introduced the Loadall agricultural telescopic handler, followed in 1983 by agricultural wheel loaders. And in 1991, JCB introduced the Fastrac, the world's fastest production tractor, and the only fully suspended, high draft tractor capable of road speeds up to 43 mph (70 km/h).

Not just an equipment company, JCB is an innovative engineering and technology company. In 2006, JCB introduced TorqueLock, to reduce fuel consumption

and increase travel speeds for agricultural machines.

In 2012, JCB introduced the revolutionary JCB EcoMAX engine, requiring no aftertreatment and offering 10 percent fuel savings, and has since built more than 250,000 units.

More recently, JCB has introduced the innovations that will drive productivity and efficiency to even greater levels, with technologies such as the state-of-the-art LiveLink telematics system, Smart Hydraulics, JCB SmoothRide System, Activ Traction and hydrostatic dual steering.

To learn why primary producers across North America are switching to JCB agriculture machines, contact your local JCB dealer or visit www.jcb.com.



DISCOVER THE FASTRAC DIFFERENCE

FASTRAC 4000 AND 8000 SERIES TRACTORS ARE THE MOST PRODUCTIVE, FULL-SUSPENSION TRACTORS ON THE MARKET.

Speed with safety.

The JCB Fastrac is equipped with unique suspension that delivers superior handling and stability, enabling road speeds up to 43 mph (70 km/h)*. Twin caliper external disc brakes* and truck-standard air braking with ABS provide unrivaled stopping power and safety.

Ultimate comfort.

Full suspension and the spacious, mid-mounted Command Plus cab ensure best-in-class comfort, in the field and on the road. Operators benefit from excellent visibility, while the ergonomically-designed controls and highly responsive, fail safe, hydrostatic steering system makes for effortless operation.

Greater productivity.

The optimal engine and CVT transmission combination delivers superior power and torque, to enable faster road and field speeds and, ultimately, greater efficiency. Along with class-leading comfort, allowing operators to work for longer without fatigue, the Fastrac is the ultimate productivity machine.

Best-in-class versatility.

From hauling up to 43 mph (70 km/h)* to heavy draft work at 4 mph (7 km/h), no tractor is more versatile. A purpose-designed chassis and powerful rear hitch enhance versatility, to work with a wider variety of attachments and implements.



JCB Fastrac machines feature Activ Traction*, which constantly monitors all four wheels and automatically adjusts engine speed to prevent wheel spin.



		4160	4190	4220	8290	8330
Engine type		6.6 Liter Tier 4 Final	6.6 Liter Tier 4 Final	6.6 Liter Tier 4 Final	8.4 Liter Tier 4 Final	8.4 Liter Tier 4 Final
Rated power	hp (kW)	160 (119)	189 (141)	217 (162)	280 (209)	335 (250)
Max. torque	lbf (Nm)	553 (750) @ 1,450 rpm	627 (850) @ 1,450 rpm	700 (950) @ 1,450 rpm	996 (1,310) @ 1,500 rpm	1,062 (1440) @ 1,500 rpm
Road speed	mph (km/h)	43 (70)	43 (70)	43 (70)	43 (70)	43 (70)
Transmission		CVT	CVT	CVT	CVT	CVT
Max. rear lift capacity	lb (kg)	13,200 (6,000)	15,400 (7,000)	17,600 (8,000)	22,000 (10,000)	22,000 (10,000)
Max. front lift capacity	lb (kg)	7,716 (3,500)	7,716 (3,500)	7,716 (3,500)	7,716 (3,500)	7,716 (3,500)

* Agri Series models include 4220 and 8330.

THE WORLD'S NUMBER ONE

JCB AGRICULTURAL TELEHANDLERS HAVE REVOLUTIONIZED HOW BULK MATERIAL IS LOADED, LIFTED PLACED AND MOVED ON THE FARM.

Smart machines.

JCB's AGRI Loadalls are loaded with features to maximize productivity, efficiency and reliability.

JCB AGRI Loadall telehandlers are equipped with proven, T4F-compliant engines with reduced or no required aftertreatment and simplified servicing requirements.

The JCB regenerative hydraulics system improves cycle times by up to 19 percent and reduces fuel consumption by up to 15 percent.

High-flow auxiliary hydraulics offer ample power for demanding agricultural applications and power-hungry attachments. Auxiliary hydraulics venting, operated by a button in the cab, makes it easier to change attachments.

JCB Smart Hydraulics include end-of-stroke damping on boom lift and retraction, and an 'auto' mode for the JCB SmoothRide System (SRS).

Seat-mounted servo joysticks and the JCB Bucket Control System, which eliminates the need for an operator to make repeated joystick movements, work together to improve comfort, reduce fatigue and improve productivity.

Superior engine and drivetrain.

The side-mounted JCB EcoMAX engine works in perfect harmony with the transmission and JCB-built axles for reliable, efficient drivetrain performance. For even more control, choose the optional 6-speed transmission. The 525-60 Agri is equipped with a 2-speed hydrostatic transmission for precise control in confined spaces.

Formidable strength.

JCB Loadall booms are mounted low in the chassis, for a rigid structure and enhanced over-the-shoulder visibility.

A comfortable operator environment.

The operator environment in JCB AGRI Loadall telehandlers is ergonomically designed, and air conditioning is an available option, for maximum comfort and productivity.



		525-60 Agri Plus	535-95 Agri Plus	536-60 Agri/Plus	541-70 Agri Plus/Super	560-80 Agri Super
Max. lift height	ft-in (mm)	20-0 (6,100)	31-2 (9,500)	20-6 (6,250)	23-0 (7,000)	25-11 (7,900)
Max. lift capacity	lb (kg)	5,500 (2,495)	6,600 (2,995)	7,000 (3,175)	9,000 (4,082)	12,000 (5,443)
Max. forward reach	ft-in (mm)	10-0 (3,300)	21-5 (6,520)	10-10 (3,300)	12-2 (3,700)	14-6 (4,419)
Lift capacity at full reach	lb (kg)	1,650 (749)	1,100 (500)	3,000 (1,364)	3,400 (1,543)	3,750 (1,700)
Overall height	ft-in (mm)	6-6 (1,970)	8-4 (2,540)	8-2 (2,490)	8-4 (2,540)	8-6 (2,590)
Overall width over tires	ft-in (mm)	6-0 (1,840)	7-8 (2,340)	7-6 (2,290)	7-8 (2,340)	8-4 (2,540)
Overall length to front carriage	ft-in (mm)	13-1 (4,000)	16-4 (4,990)	14-11 (4,550)	16-4 (4,990)	17-3 (5,270)
Turn radius over tires	ft-in (mm)	11-2 (3,400)	12-6 (3,800)	12-2 (3,700)	12-6 (3,800)	13-5 (4,100)
Total weight (unladen)	lb (kg)	12,302 (5,580)	17,681 (8,020)	15,873 (7,200)	17,196 (7,800)	23,755 (10,775)
Engine (rated)	hp (kW)	74 (55)	125 (93)	109/125 (81/93)	125 (93)	45 (108)
Max. speed	mph (km/h)	19 (30)	20 (33)	20 (33)	20/25 (33/40)	25 (40)

* Agri Series models include 525-60 Agri Plus, 535-95 Agri Plus, 536-60 Agri, 541-70 Agri Plus, 541-70 Agri Super, 560-80 Agri Super.

PUTTING THE OPERATOR FIRST

JCB ARTICULATED TELESCOPIC HANDLERS ARE BUILT WITHOUT COMPROMISE, TO PROVIDE OPTIMAL LIFTING, DIGGING AND TOOL CARRYING CAPABILITY IN CONFINED WORK SPACES.

Usable performance.

JCB Telemaster articulated telescopic handlers are built without compromise to provide the strength, power and lift capability needed for demanding agricultural work, in an articulated platform for maximum maneuverability in confined spaces.

The TM220 features a 74 hp (55 kW) JCB Diesel by Kohler engine, requiring no DPF, no DEF, and a 3-speed hydrostatic transmission. The TM320 features a 125 hp (93 kW) JCB EcoMAX engine that delivers excellent performance at low engine speeds, for outstanding efficiency. Topping out the lineup is the TM420, featuring JCB's 4.8L EcoMAX engine making 145 hp. The JCB EcoMAX coupled with a highly efficient transmission, with available TorqueLocks for gears 2-6 improves cycle times and tractive effort.

Perfect operator position.

Through large windows surrounding a high central driving position, JCB Telemaster operators enjoy an unobstructed 360-degree view over the low boom pivot.

Precision loading.

For easier connection of attachments and accurate placement of loads, the JCB Telemasters feature side-shift capability.

An efficient hydraulics package.

JCB hydraulics use a flow-sharing system that allows two simultaneous functions and a variable-flow piston pump that uses power only on demand. Overall, the system enables reduced cycle times and fuel consumption.



		TM220	TM320	TM420
Max. operating weight	lb (kg)	14,390 (6,495)	17,151 (7,780)	21,010 (9,530)
Max. engine power	hp (kW)	74 (55)	125 (93)	145 (108)
Lift capacity	lb (kg)	4,410 (2,000)	6,390 (2,904)	8,550 (3,878)
Lift height	ft-in (mm)	15-0 (4,572)	17-1 (5,200)	17-8 (5,375)
Max. forward reach	ft-in (mm)	10-0 (3,050)	9-10 (2,950)	10 (3,050)
Lift capacity at full reach	lb (kg)	2,535 (1,150)	3,530 (1,601)	4,700 (2,132)
Full turn tipping load	lb (kg)	5,436 (2,465)	8,644 (3,921)	10,845 (4,919)
Max. breakout force	lbf	10,993	13,800	15,873
Max. speed	mph (km/h)	25 (40)	25 (40)	25 (40)

* Agri Series models include TM220, TM320 and TM420.

WHEEL LOADER MUSCLE

JCB WHEEL LOADERS ARE THE ULTIMATE SOLUTION FOR EFFICIENT BULK MATERIAL HANDLING.

A comfortable operator is a productive operator; all controls can be adjusted to suit individual preferences.



Top performer.

The range of seven agri-specific JCB wheel loaders make light work of bulk materials handling.

All JCB wheel loaders are equipped with T4F compliant turbocharged engine, for superb power, torque and fuel efficiency, and with low noise levels.

JCB's innovative drivetrain.

The two JCB compact wheel loaders feature hydrostatic transmissions for ultimate control and response. The five larger models in the range have torque converter powershift transmissions for formidable low-speed pushing power.

Strength and durability.

The chassis of every JCB wheel loader features an articulated center joint with a heavy-duty center pivot pin and oversized bushes, and twin-taper roller bearings, all designed to tolerate extreme vertical and horizontal loads.

Out of harm's way.

Steering rams are located high in the chassis for protection from potential impact damage.

Quick In and Out.

407 and 409 compact wheel loaders are designed for easy operator entry and exit.



		407 AGRI	409 AGRI	411 AGRI	417 AGRI	427 AGRI	437 AGRI	457 AGRI
Operating weight	lb (kg)	11,162 (5,063)	13,067 (5,927)	19,615 (8,897)	21,385 (9,700)	30,613 (13,886)	34,796 (15,783)	45,171 (20,489)
Max. gross engine power	hp (kW)	64 (48)	74 (55)	109 (81)	125 (93)	179 (133)	183 (136)	258 (193)
Shovel capacity	yd ³ (m ³)	1.0 (0.8)	1.3 (1.0)	1.83 (1.4)	2.09 (1.6)	2.49 (1.9)	3.14 (2.4)	4.3 (3.3)
Full turn tipping load	lb (kg)	7,333 (3,326)	8,042 (3,647)	11,424 (5,182)	11,766 (5,337)	16,330 (7,407)	16,294 (7,391)	27,757 (12,590)
Payload	lb (kg)	3,666 (1,662)	4,021 (1,824)	5,712 (2,591)	5,884 (2,669)	8,165 (3,704)	8,148 (3,696)	13,878 (6,295)
Max. breakout force	lbf	9,419	12,095	14,006	13,466	27,202	29,450	30,349
Dump height @ 45°	ft-in (mm)	8-2 (2,489)	8-7 (2,616)	8-10 (2,687)	9-4 (2,839)	10-9 (3,278)	11-6 (3,504)	9-9 (2,966)
Max. speed	mph (km/h)	21 (35)	25 (40)	25 (40)	25 (40)	21/25 (35/40)	21/25 (35/40)	21 (35)

* Agri Series models include 407 Agri, 409 Agri, 417 Agri, 427 Agri, 437 Agri.

WORLD'S SAFEST SKID STEERS

JCB SKID STEER LOADERS AND COMPACT TRACK LOADERS OFFER MORE VISIBILITY, MORE SAFETY, BIGGER CABS AND BETTER ALL-AROUND PERFORMANCE THAN THE COMPETITION.

The world's safest skid steer.

1 All JCB skid steer and compact track loaders feature the iconic JCB Powerboom™ loader arm, featuring 20 percent more steel than conventional, twin-arm machines, and tapered pins for superior rigidity. The single loader arm enables JCB's unique wide-opening side entry door, which eliminates the need for operators to climb over hazardous attachments or under an unsupported boom.

More visibility.

2 JCB skid steer and compact track loaders offer 270-degree, all-around visibility, which is 60 percent better than competing twin-armed machines.

Better operator environment.

3 The cabs on JCB's seven small-platform models are 46 percent larger than similarly-sized competitor models, while the cabs on JCB's 10 large-platform, 'Hi-Viz' models are 33 percent larger than the competition.

Class-leading serviceability.

On SAE Service Audit Scores, JCB outperforms the competition by 24 percent on large platform skid steers, and 21 percent on small platform machines.

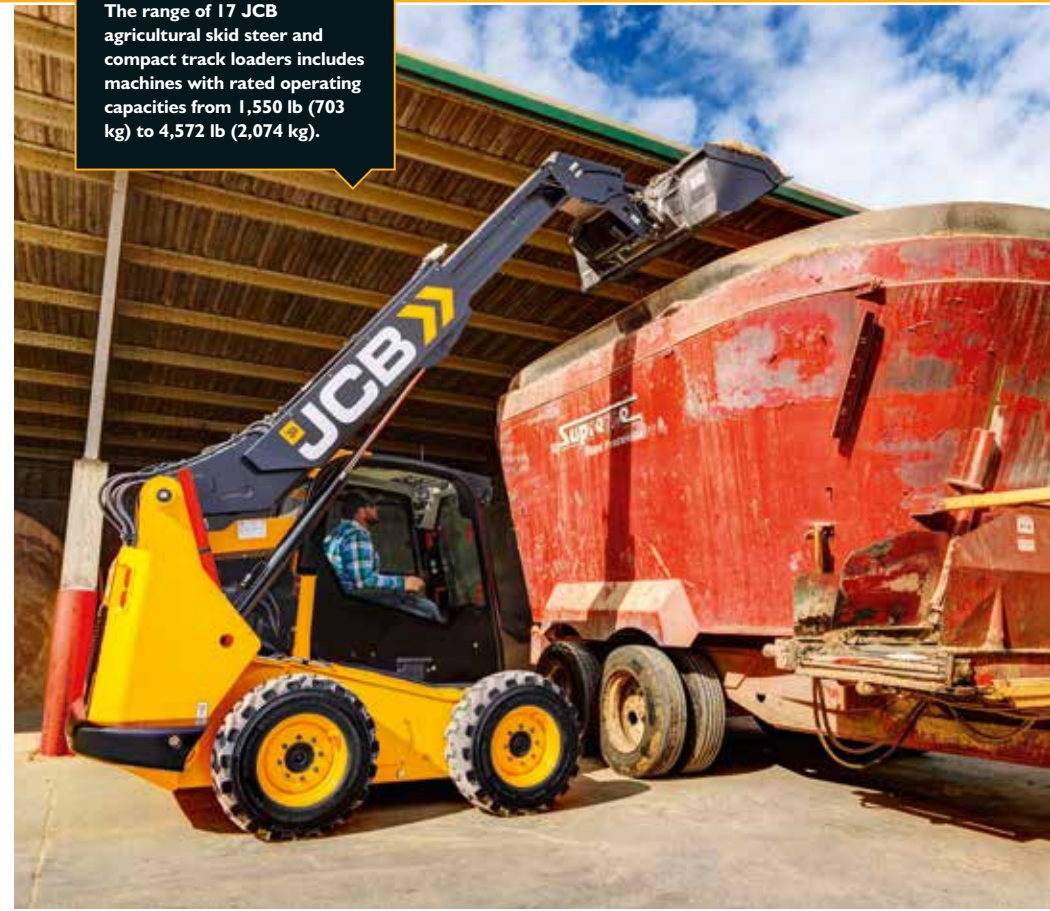
Lower operating costs.

JCB skid steer and compact track loaders are equipped with proven and reliable JCB Diesel by Kohler or JCB EcoMAX engines, requiring no engine after-treatment. Additionally, JCB machines use up to 16 percent less fuel than competing machines.

The Industry's First.

A JCB Teleskid is the first skid steer or compact track loader with a telescopic boom, allowing it to lift higher, reach further and dig deeper than any other skid steer in the market.

The range of 17 JCB agricultural skid steer and compact track loaders includes machines with rated operating capacities from 1,550 lb (703 kg) to 4,572 lb (2,074 kg).





		215**	270	300	3TS-8W
Lift path		Vertical	Vertical	Vertical	Radial & Vertical
Rated operating capacity	lb (kg)	2,112 (958)	2,723 (1,235)	3,186 (1,445)	1,347 (611) - extended
Tipping load	lb (kg)	4,222 (1,915)	5,448 (2,471)	6,369 (2,889)	6,418 (2,911) - retracted
Operating weight	lb (kg)	7,253 (3,290)	8,680 (3,937)	9,288 (4,213)	9,859 (4,472)
Engine model		KDI 2504 TCR	ECOMAX TCAE-55	ECOMAX TCAE-55	ECOMAX TCAE-55
Gross horsepower @ 2,400 RPM	hp (kW)	74 (55)	74 (55)	74 (55)	74 (55)
Gross torque @ 1,200 RPM	lbf	221.2	295	295	295
Loader lift force	lb (kg)	4,592 (2,083)	6,056 (2,747)	6,056 (2,747)	5,765 (2,615) - retracted
Bucket breakout	lb (kg)	4,899 (2,222)	6,543 (2,968)	6,543 (2,968)	6,543 (2,968) - extended
Auxiliary hydraulic flow	gpm (lpm)	18.5 (70)	24 (90)	24 (90)	24 (90)
High flow	gpm (lpm)	30.4 (115)	31.7 (120)	33 (125)	33 (125)
Two speed	mph (km/h)	7.5 (12.0) / 11.5 (18.5)	6.8 (10.9) / 12.4 (20.0)	6.8 (10.9) / 12.4 (20.0)	6.8 (10.9) / 12.4 (20)

*Agri Series models include 3TS-8W, 215, 270. **The 215 can be counterweighted up to a 2,257 lb (1,024 kg) ROC.



		215T**	270T	300T	325T	3TS-8T
Lift path		Vertical	Vertical	Vertical	Vertical	Radial & Vertical
Rated operating capacity (35%)	lb (kg)	2,105 (955)	2,723 (1,235)	3,000 (1,361)	3,201 (1,452)	3,695 (1,676) - retracted
Rated operating capacity (50%)	lb (kg)	3,009 (1,365)	3,995 (1,812)	4,314 (1,957)	4,572 (2,074)	1,614 (732) - extended
Tipping load	lb (kg)	6,016 (2,729)	7,990 (3,624)	8,627 (3,913)	9,145 (4,148)	10,558 (4,789) - retracted
Operating weight	lb (kg)	9,098 (4,127)	11,003 (4,991)	11,219 (5,089)	12,364 (5,608)	12,615 (5,722)
Engine model		KDI 2504 TCR	ECOMAX TCAE-55	ECOMAX TCAE-55	ECOMAX TCAE-55	ECOMAX TCAE-55
Gross horsepower @ 2,400 RPM	hp (kW)	74 (55)	74 (55)	74 (55)	74 (55)	74 (55)
Gross torque @ 1,200 RPM	lbf	221.2	295	295	295	295
Loader lift force	lb (kg)	4,592 (2,083)	5,807 (2,634)	5,807 (2,634)	5,807 (2,634)	5,574 (2,528) - retracted
Bucket breakout force	lb (kg)	4,945 (2,243)	6,543 (2,968)	6,543 (2,968)	6,543 (2,968)	6,517 (2,956) - extended
Auxiliary hydraulic force	gpm (lpm)	18.5 (70)	24 (90)	24 (90)	24 (90)	24 (90)
High flow	gpm (lpm)	30.4 (115)	31.7 (120)	33 (125)	33 (125)	33 (125)
Two speed	mph (km/h)	5.6 (9.0) / 7.8 (12.5)	4.8 (7.7) / 7.8 (12.5)	4.8 (7.7) / 7.8 (12.5)	4.8 (7.7) / 7.8 (12.5)	4.8 (7.7) / 7.8 (12.5)

* Agri Series models include 215T, 270T, 3TS-8T. ** The 215T can be counterweighted up to a 2,138 lb (970 kg) ROC.

WORK ANYWHERE VERSATILITY

JCB ROUGH TERRAIN FORKLIFTS ARE THE MOBILE, RELIABLE, VERSATILE AND EASY-TO-USE SOLUTION FOR VIRTUALLY ANY RE-HANDLING ENVIRONMENT.

High on power and torque.

JCB Rough Terrain Forklifts (RTFLs) are powered by JCB EcoMAX 74 hp (55 kW) engines that deliver high power and torque at low engine speeds, to minimize fuel consumption.

JCB RTFLs travel at speeds up to 18 mph (29 kph), to get to jobs faster and complete them in less time.

Proven JCB transmission.

The JCB Synchro Shuttle transmission delivers fast, smooth directional changes.

For added safety, the transmission is disabled when the operator isn't seated.

Designed for productivity.

The engine, transmission, axles, hydraulic rams and chassis of every JCB rough terrain forklift is built entirely by JCB, so all components work together in perfect harmony. The result is a more reliable, durable and productive machine for all applications and conditions.

Total versatility.

A selection of mast heights, attachments, carriage types and tires allow JCB RTFLs to be tailored to suit specific requirements.

Tested tough.

JCB uses state-of-the-art manufacturing processes, like robot machining, precision paint technology and innovative assembly techniques, to achieve exceptional product quality. A stringent testing program, which includes prolonged high stress loading, and thousands of transmission cycles, affirms the readiness of every JCB RTFL to perform in the most demanding applications. Additionally, JCB engines are field proven, with more than 250,000 deployed since 2004, and more than 110,000 hours of testing on the latest JCB EcoMAX engines.



JCB RTFLs achieve fast directional changes, great performance and superb traction, even on rough terrain.



		930	940	950
Lift capacity	lb (kg)	6,000 (2,721)	8,000 (3,628)	10,000 (4,500)
Gross power	hp (kW)	74 (55)	74 (55)	74 (55)
Transmission type		Synchro Shuttle	Synchro Shuttle	Synchro Shuttle
Hydraulic flow	gpm (lpm)	20 (76)	20 (76)	20 (76)
Rear axle type		2WD/4WD	2WD/4WD	4WD
Turning radius (2WD)	ft-in (mm)	14-4 (4,368)	14-7 (4,445)	16-1 (4902) - 4WD only
Operating weight*	ft-in (mm)	14,495 (6,575)	15,750 (7,144)	17,295 (7,845)
Fuel tank	gal (l)	19.3 (73)	19.3 (73)	19.3 (73)
Mast options				
15' freelif		✓	✓	✗
22' clearview		✓	✓	✓
22' freelif		✓	✓	✗

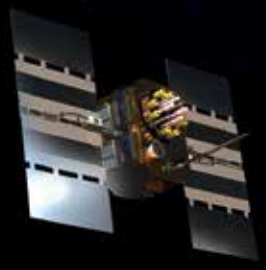
* Fitted with 22' clearview mast and 66" shaft carriage.

LIVELINK, WORK SMARTER

LIVELINK IS AN INNOVATIVE SOFTWARE SYSTEM THAT LETS YOU MANAGE YOUR JCB MACHINES REMOTELY FROM A COMPUTER, TABLET OR SMART PHONE.

Productivity and cost benefits

By providing information such as idle time monitoring and machine fuel consumption, JCB LiveLink helps reduce fuel consumption, to save money and improve productivity. Machine location information can help improve efficiency and may even reduce insurance costs.



Maintenance benefits

Accurate hours monitoring and service alerts to improve maintenance planning, and real-time location data to improve fleet management. Critical machine alerts and maintenance history records are also available.

Security benefits

LiveLink's real-time geofencing alerts advise when machines move out of predetermined zones, and real-time curfew alerts inform of unauthorized usage. Real-time location information, advanced ECU matching, and remote pin code management is also available.

VALUE ADDED

JCB'S WORLDWIDE CUSTOMER SUPPORT IS FIRST CLASS. WHATEVER YOU NEED AND WHEREVER YOU ARE, WE'LL BE AVAILABLE QUICKLY AND EFFICIENTLY TO HELP MAKE SURE YOUR MACHINERY IS PERFORMING TO ITS FULL POTENTIAL.



JCB Technical Support Service provides instant access to factory expertise, day or night.

JCB's Finance and Insurance teams are always on hand to provide fast, flexible, competitive quotes.

The global network of JCB Parts Centers is a model of efficiency. With 16 regional bases, we can deliver around 95 percent of all parts anywhere in the world within 24 hours. Our genuine JCB parts are designed to work in perfect harmony with your machine for optimum performance and productivity.



JCB Yellow Shield offers comprehensive extended warranties and service agreements, as well as service only or repair and maintenance contracts. JCB maintenance teams offer competitive labor rates and no-obligation quotes.





ONE COMPANY, MORE THAN 300 MACHINES.

Your nearest JCB dealer

North America | Agricultural Range

JCB North America

2000 Bamford Blvd., Pooler, Georgia, 31322 Tel: (912) 447-2000

Download the very latest information on this product range at www.jcb.com

JCB Inc. All rights reserved. No part of this publication may be reproduced, stored in a retrieval system, or transmitted in any form or by any other means, electronic, mechanical, photocopying or otherwise, without prior permission from JCB Inc. All references in this publication to operating weights, sizes, capacities and other performance measurements are provided for guidance only and may vary dependant upon the exact specification of machine. They should not therefore be relied upon in relation to suitability for a particular application. Guidance and advice should always be sought from your JCB Dealer. JCB reserves the right to change specifications without notice. Illustrations and specifications shown may include optional equipment and accessories. The JCB logo is a registered trademark of J C Bamford Excavators Ltd.

9999/5755 en-US 07/19 Issue 5 (T4F) DWUSA 481 I

 /JCBNA
  /JCBNA
  /JCBNORTHAMERICA

